

Year 3 Art – Easter Island Sculptures



Art

Enquiry Questions: Can we combine the ideas behind the Easter Island statues and the sculptures by Henry Moore to make our own sculptures?

Why this/why now?

The Easter Island statues and are an iconic piece of historical artwork. The figurative sculptures share some similarities to the sculptures of Henry Moore.

How does this link to the National Curriculum?

Art National Curriculum – to create sketch books to record their observations and use them to review and revisit

Ideas; to improve their mastery of art and design techniques, including drawing, painting and sculpture with a range of materials [for example, pencil, charcoal, paint, clay] and about great artists, architects and designers in history.

We will be artists by:

- showing an awareness of space when drawing;
- using clay and other malleable materials and practise joining techniques;

Are there any links to Leicester?

Yes, we are looking at and comparing some South American countries in geography. The main religion in South America is Christianity (which we will be teaching in R.E). This Henry Moore sculpture can be seen at Leicester's New Walk Museum.

Although it isn't currently on display, it is in their collection.

How will this unit of work be assessed?

Through Assessment for Learning, written work, Plicker and questioning.

How will the learning journey be evidenced?

Sketches and ideas can be found in the children's sketch books along with photographs of 3D work.

Summer Term



Character Muscles



Inventive
Risk Taking
Perseverance

Things my family can ask me:

What did you use to make your sculpture?
What were the Easter Island heads made from?

Links to other subjects

In Geography, we learnt about South America.

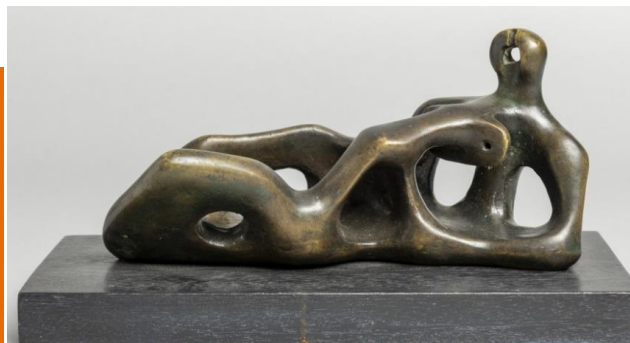
The Knowledge (these are the key bits of information!)



Key Knowledge

- To know what 3 dimensional means.
- To be aware of the properties of clay and how it can be manipulated.
- To know that clay can dry out and how this affects how the artist uses it.
- To know how to join clay pieces together using scratch and slip technique.

Sculpture examples



Key Vocabulary

Art

- 3- dimensional** — an object which isn't flat (2D) it has height, length & width (3D)
- clay** — a sticky fine grained earth that can be moulded when wet and dries to become hard
- coil** — a long piece of clay wound around to make something, eg the base or walls of a pot
- slab** — a flat tile of clay, slabs can be joined together to make a pot
- join** — to attach 2 parts of something together, eg. a pot
- scratch and slip** — the method of joining parts of clay together. One of the clay surfaces is scratched to make it rough, water (slip) is brushed on the other surface and then surfaces are pressed together.
- technique** — a way of doing something
- manipulate** — to handle/ move/ change the shape of something
- Sketch** — to draw lightly, start with ghost lines
- Observation** — to look carefully

Further Research: the Tate Gallery has a brilliant website for kids interested in art. Check out Barbara Hepworth. She made sculptures similar to Henry Moore-
<https://www.tate.org.uk/kids>