

Journey inside a computer

| | |
|---------------------|---|
| Algorithm | A sequence of instructions when followed, solve a problem. |
| Computer | Electronic machine that accepts and processes information to produce an output, and then stores the results. |
| Computer Program | A series of instructions, that are written for a computer to follow, using inputs and outputs to produce an outcome. Also known as software or applications (apps). |
| CPU | Central Processing Unit. The brain of a computer that deals with all the data it receives from input and output devices, as well as programs run within the computer. |
| Data | Information used for a specific purpose or investigation. |
| Desktop | A tower computer that needs a mouse, keyboard and monitor, that remains in one place. |
| GPU | Graphics Processing Unit. It is a piece of hardware that is used to help generate 2D and 3D images for programs such as games. |
| Hard disk drive HDD | An internal or external device that can store information such as files, documents, images and programs. |
| Instructions | A series of steps that need to be performed in order. |
| QR code | Quick Response code. Is presented in a similar way to a bar code and when scanned, takes you to a specific website or provide information. |
| RAM | Random Access Memory. A piece of hardware that allows data to be recalled or stored within a computer. |
| ROM | Read Only Memory. Information stored within ROM can only be read and not edited. |
| Tablet device | A handheld computer, that consists of a touchscreen, operating system and a rechargeable battery. |
| Trackpad | An input device commonly found built into laptops. It is used to move the cursor with the touch of your finger, and some allow for multiple finger gestures. |

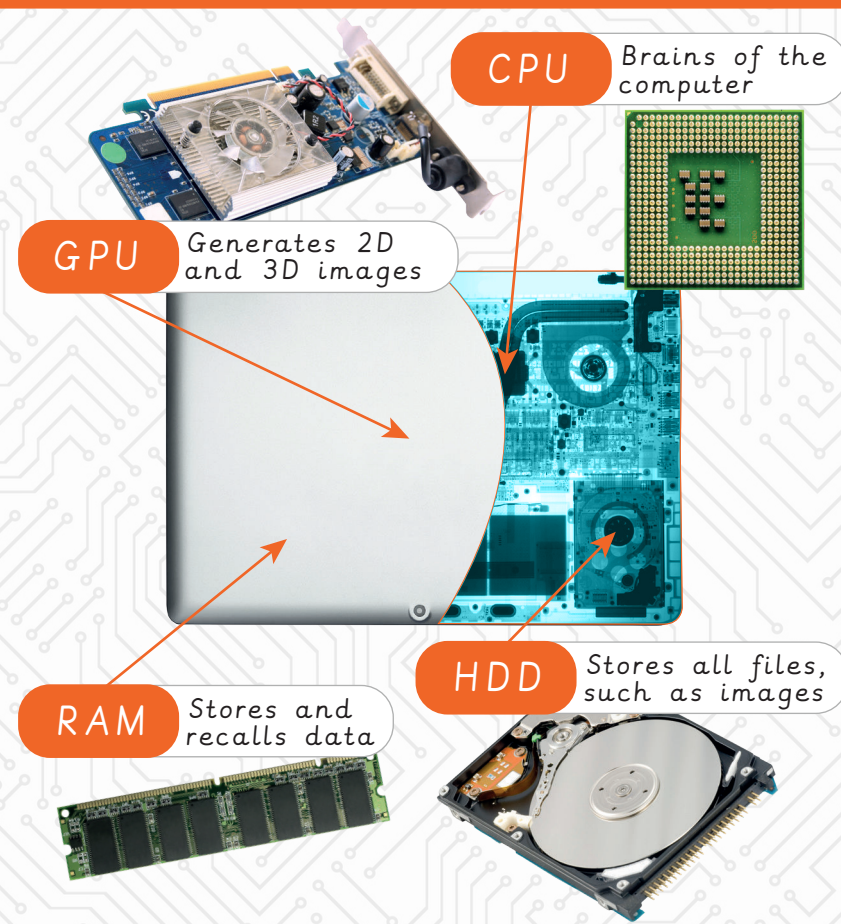


Scan each of these quick response codes, with a QR scanner app or device and see where they go!



Key facts

Computer parts inside of a laptop:



Other portable electronic devices:

