

*"Ensuring that each child reaches their potential and develops an enthusiasm for lifelong learning."*



We would like to extend a warm welcome to you and your family, thank you for choosing St Mary's Fields Primary School. Our caring and nurturing staff are ready to help you and your child embark upon their learning journey.

At St Marys we put you and your child at the heart of everything we do. We aim to ensure that every day is full of purposeful play, exploration, curiosity, FUN and that they leave our setting each day with a spring in their step.

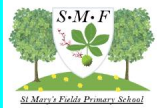




# What is the Early Years Foundation Stage?

The Early Years Foundation Stage (E.Y.F.S.) is the stage of education for children from birth to the end of the 4+. It is based on the recognition that children learn best through play and active learning.





# The magic: Laying the foundation! What makes St Mary's Special?

In Foundation Stage we try to create learning environments that enhance children's exploration of the world around them, promote curiosity, investigation, independence, resilience, purposeful play and social interaction!



We follow child interests and incorporate these into our planning. We also teach using some themes such as 'celebrations' and 'ourselves' to teach new vocabulary and explore traditions etc



# What makes St Mary's Special?

**Talk Boost** is a targeted and evidenced based intervention, which supports language delayed children to make significant progress with their language and communication skills



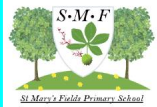
**Through Route to Resilience**  
We aim to improve mental health outcomes for children and staff.

**Foundation Character Muscles:**

- Curiosity
- Imagination
- Risk Taking
- Enthusiasm
- Concentration
- Inclusiveness
- Listening/Communicating
- Friendship

Our outdoor learning experiences!





# The EYFS Curriculum

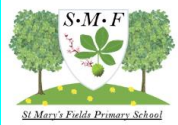
We have 7 areas of learning. These are split into Prime areas and Specific areas.

**Prime areas** – communication and language, physical development, personal, social and emotional development.



**Specific areas** – literacy, mathematics, understanding the world, expressive arts and design.

We promote these themes through our school day, in something called the play sandwich. Play is really important and children need the freedom to explore and play. Our long periods of purposeful play are 'sandwiched' between inputs on the carpet.



# Personal, Social and Emotional Development (PSED)

The Children will be learning to:

- become self-confident.
- become independent
- make relationships with other children and adults
- share and turn take



# Communication and Language (C&L)

The children will be learning to:

- talk confidently and clearly.
- enjoy listening to stories, songs and poems.
- listen to and understand new words and instructions.

I think this seed might need water to help it grow.



You found a fossil, its from the extinct dinosaurs.







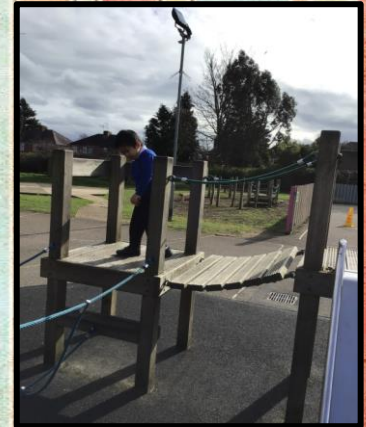
# Physical Development (PD)



The children will be learning to:

- move confidently and safely.
- handle a range of equipment: eg bikes, balls, scissors, knife and fork, pencil, paintbrush
- meet their own care needs eg toileting, washing hands
- dress and undress themselves eg put on coats, do up their zip.

The children will have PE each week





# Literacy: Reading /Writing

At St Marys we want all children to develop a love for stories, books and reading. Each week children will choose a library book to take home. They will share this book with a teacher first to develop important pre reading skills. Please read a story with your child every day at home to help them to develop a love for reading!

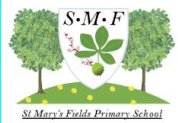


At St Mary's we teach the children to read following ALS Phonics.

In Nursery, the children follow Phase 1 of Letters and Sounds which teaches important pre reading skills. They will also take part in shared reading and end each day with a story time.

To develop writing skills children take part in dough disco and squiggle wiggle sessions. Later on they will learn to write their name.





# Mathematics: Number / Numerical pattern

The children will be learning to:

- develop an understanding of maths through stories, songs, games and imaginative play.
- recite, count and recognise numbers to 5
- understand ideas such as 'heavier than' or 'bigger'.
- be aware of shapes and space.
- learn about length, weight and capacity through real life experiences.

I can fit 10 ducks in this bowl.



Maths is everywhere! Let's make maths magical and purposeful!



# Understanding the World.

The children will be:

- exploring the world around them and talking about what they see
- building with different materials
- developing positive attitudes about the differences between people
- beginning to understand the need to care for the natural environment

We are planting sunflowers!



We loved eating noodles to celebrate Chinese New Year!



# Expressive Arts and Design



The children will explore:

- colours, shapes and textures.
- making things.
- role play.
- making music
- cooking.
- singing and rhymes

We will learn that all of our creative ideas are unique and valued. At St Mary's Fields there is no pre made template to our imagination.



Those who do not  
think outside the box  
are easily contained.

Nicolas Manetta



ARTFULPARENT.COM

Art has the role in  
education of helping  
children become  
like themselves  
instead of more like  
everyone else.

Sydney Gurewitz Clemens



# Parents as partners

- Talk to your child about what they have been doing at school.
- Read with your child on a regular basis.
- Encourage your child to become an independent learner.
- Talk to the teachers about what your child has been learning at home or upload to Tapestry.



TAPESTRY  
ONLINE LEARNING JOURNAL



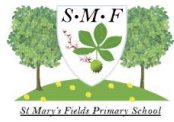


# An Example of a daily Foundation Stage 1 Timetable

This is an example of a timetable that we will work towards as they year progresses.

In the autumn we have less 'structured' carpet inputs.

Chestnut Class Timetable Spring Term					
DAY	MONDAY	TUESDAY	WEDNESDAY	THURSDAY	FRIDAY
8.45-8.55am Welcome children, self-registration, toast	Welcome children, self-registration, toast				
8.55 -9.15am Registration and carpet time	Topic	Maths	Dough Gym	Topic	Squiggle Wiggle
9.15am: Play to Learn	Play to Learn				
10.00am: Carpet time	Maths	Shared Reading	Maths	Play to Learn	Shared Reading
10.15am Milk and Fruit, Toilet	Milk and fruit	Milk and fruit	Milk and fruit	Milk and fruit	Milk and fruit
10.30am Play to Learn	Play to Learn				
11.00 Phonics	Phonics	Phonics	Phonics	PE: LCFC (studio)	Phonics
11.10 Outdoor Play	Outdoor Play				Outdoor Play
11.30 Storytime	Story	Story	Story		Story
11.45am AM children home time	12 noon: PM children arrive to join FT children for dinner				
1.00pm: Registration and carpet time.	Topic	Maths	Dough Gym	Topic	Squiggle Wiggle
1.15pm Play to Learn	Play to Learn	Play to Learn	PE (hall)	Play to Learn	Play to Learn
2.pm - 2.10pm PHONICS	Phonics	Phonics	Milk and Fruit	Phonics	Phonics
2.10 pm Milk & Fruit, Toilet	Milk and fruit	Milk and fruit	Play to Learn	Milk and fruit	Milk and fruit
2.20pm Outdoor Play	Outdoor Play	Outdoor Play	Outdoor Play	Outdoor Play	Outdoor Play
2.45pm Story-time	Story	Story	Story	Story	Story
3.00pm ..	Home time				



# Provisional Foundation Stage 1 Starting School

We will be having Stay and Play sessions at school on:  
Wednesday 28<sup>th</sup> June at 3.45–4.45pm

Before starting school, we will carry out home visits. These will be during the week Tuesday 29<sup>th</sup> August to Tuesday 5<sup>th</sup> September. You will be able to sign up for a visit during your stay and play session where you will receive a 'golden ticket' for this visit.

The children will begin phased entry into school from:  
Wednesday 6<sup>th</sup> September to Tuesday 12<sup>th</sup> September 2022 – full time children only  
From Wednesday 13<sup>th</sup> September – Wednesday 20<sup>th</sup> September – morning and afternoon part time children will begin





# Important Information!

For morning and full time children the school doors open at **8.45am** and the register will be taken by **9am**.

The morning session finishes at **11.45am**

For afternoon children the session starts at **12pm** and ends at **3.00pm**. Afternoon children will need to have eaten lunch **before** they come to school.

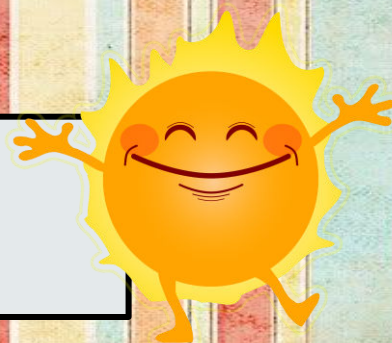
## Absence

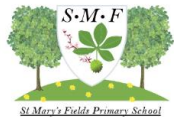
If your child is absent from school for any reason, please could you telephone the school before 9.30am to confirm why your child is not at school.

Schools now have to keep statistics on reasons for absence and publish them, so it is essential that you let us know for our records.

## School Attendance / Family Holidays

Please take family holidays in the school holiday.





# School Uniform

- **Bright blue sweatshirt, cardigan or fleece -**
  - a) purchased through either **Your School Uniform** either on line at **Yourschooluniform.co.uk** or **Uniform Direct** (shop on Humberstone Gate or online **uniform-direct.com**
  - b) purchased at **most supermarkets** (plain - no logos)
- **Black or grey trousers, skirts or pinafore dresses** (no jeans, including black denim)
- **A white or blue polo shirt, blouse or shirt** (with or without school logos)
- **Black sensible shoes or black ankle boots** (no high-tops, sandals or heels)
- **Black or grey plain socks, tights or leggings**
- In summer, girls may wear blue school dresses
- No jewellery apart from small, discrete stud earrings and for religious reasons
- Hair should be of a natural colour
- No make-up including nail varnish



On PE days your child will need to wear their PE kit to school:

- black joggers and hoodie/sweatshirt
- white T-shirt
- trainers



No logos please.



# Lunch-times

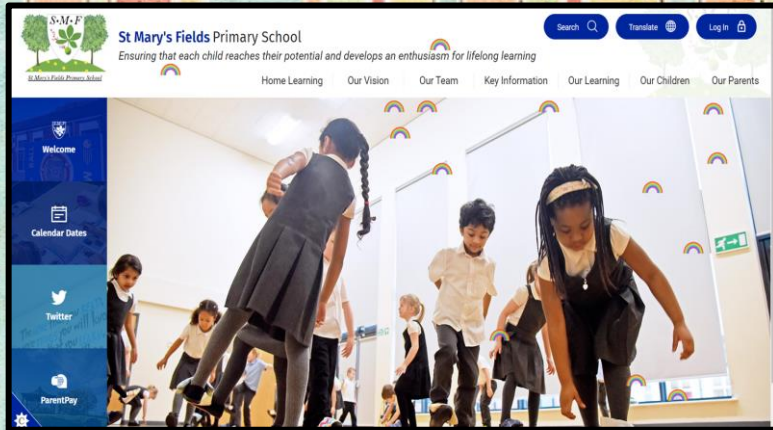
Children who have a full-time (30 hours) place will need to bring a packed lunch to school. This should be a healthy packed lunch; we are a nut-free school so please ensure that your child's lunch is nut free.





# Be part of our school community!

Visit our school website! It includes a home learning section and information on phonics, maths, wider curriculum and key contact details!



If you have a question or concern about your child starting school please email the school. We will be happy to help. 😊



Our school YouTube channel has videos to help with home learning. Also, come and hear a story or have a sing a long!



St Mary's

56 subscribers • 24 videos

Visit our channel to find educational videos, songs, learning ideas and celebrate the achievements at St Mary's Fields Primary ...



Follow us on twitter by searching @fields\_st